

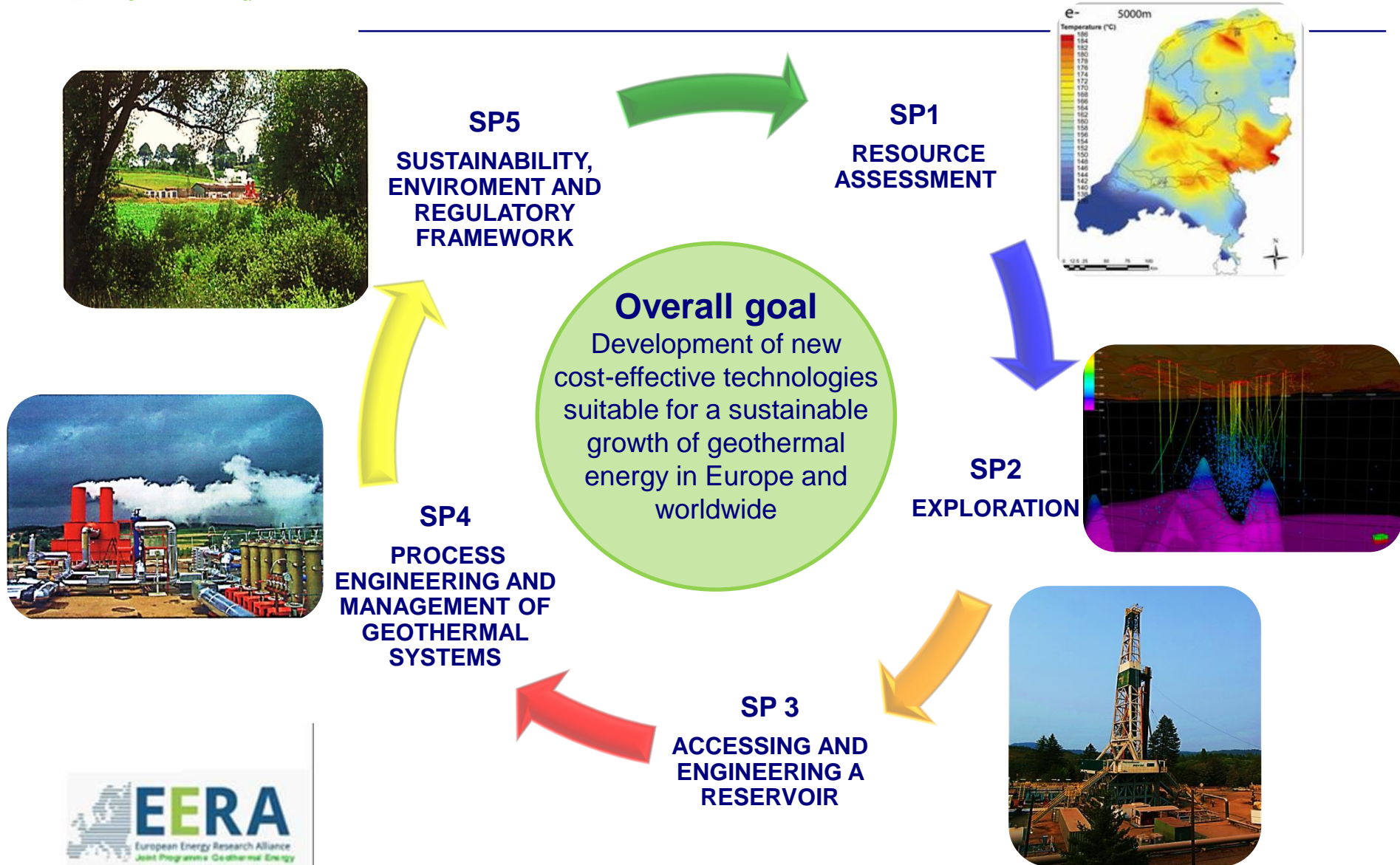


Status of the EERA Joint Programme on Geothermal Energy

Adele Manzella on behalf of Ernst Huenges and David Bruhn
EERA Joint Programme on Geothermal Energy

EERA JPGE

- Scientific network
- Hotbed/nucleus for new ideas and project proposals within FP7 and H2020
- Workshops
- Input into strategic documents (SET Plan)
- Communication partner for EC
- However: no joint projects developed as EERA projects
=> no cooperation on national funding sources



EERA – JPGE Participants

2010

Short Name	Country
BRGM	France
CEGL	Italy
CNR	Italy
CNRS	France
CRES	Greece
ETH Zürich	Switzerland
GFZ Potsdam	Germany
ISES	Netherlands
ISOR	Iceland
KIT	Germany
LIAG	Germany
TNO	Netherlands
12 participants 7 countries ~250 persons	

2012

Short Name	Country
Uni Neuchâtel	Switzerland
ENEA	Italy
INGV	Italy
LNEG	Portugal
PT Milano	Italy
BGS	UK
RWTH Aachen	Germany
U Torino	Italy
VITO	Belgium
IFE	Norway
U Bari	Italy
U Trieste	Italy
TU Darmstadt	Germany
25 participants 11 countries ~350 persons	

2015

Short Name	Country
UFZ Leipzig	Germany
PGI	Poland
Uni Krakow	Poland
...	
GE Bochum	Germany
Sintef	Norway
Uni Bergen	Norway

Current status:
35+ participants
2 new applicants
13 countries
~430 persons

Strategic activities

Geothermal Energy under-represented in SET Plan

Contribution to SET-Plan documents

JPGE input in the

- Roadmapping exercise ***Materials for the SET Plan – Materials for Geothermal Energy*** (2011)
- ***Exercise on Education and Training for the SET Plan*** (2012/13). Rapporteur: Prof. Eva Schill (formerly Univ. Neuchâtel/CH)
- Integrated Roadmap Energy (2014)

Workshop with EU Commissioner Oettinger (DG Energy)

Brussels 15th of November 2012

“Geothermal Energy for Urban Areas”

European geothermal PhD day

1. 12th of February 2010, Potsdam / Germany
2. 1st/2nd of March 2011, Reykjavík / Iceland
3. 29th/30th of March 2012, Pisa / Italy
4. 6th/7th of May 2013, Szeged / Hungary
5. 1st/2nd of April 2014, TU Darmstadt / Germany
6. 25th/26th of February 2015, TU Delft / NL
7. 25th/26th of February 2016, Uni Bari / Italy

40 to 100 PhD students at each PhD Day

With industry support

Relation to industry

- EERA JPs are strictly academic
- Contact to industry strongly encouraged
- Possibility for research departments/groups from industry to join as associate participants
- So far no industry participant in EERA JPGE
- Contact with industry corresponds to individual contact

*Industry and EGEC members in the advisory board,
joint activity toward a Technological Platform, shared
policy with EGEC and Geothermal ERA-NET
Consortium*

Alliance and cooperation

- Networking is useful, and provides occasions for some cooperation on specific, common topics
- True cooperation requires common funds and common projects. So far this was possible only with EU projects
- Funding mechanism to cooperate with national funds is still lacking

Thank you